

RAGLAN SLEEVE

*All values are given in cm.

This instruction is developed from the basic dress block, which is fitted to the sleeve and the basic dress sleeve.

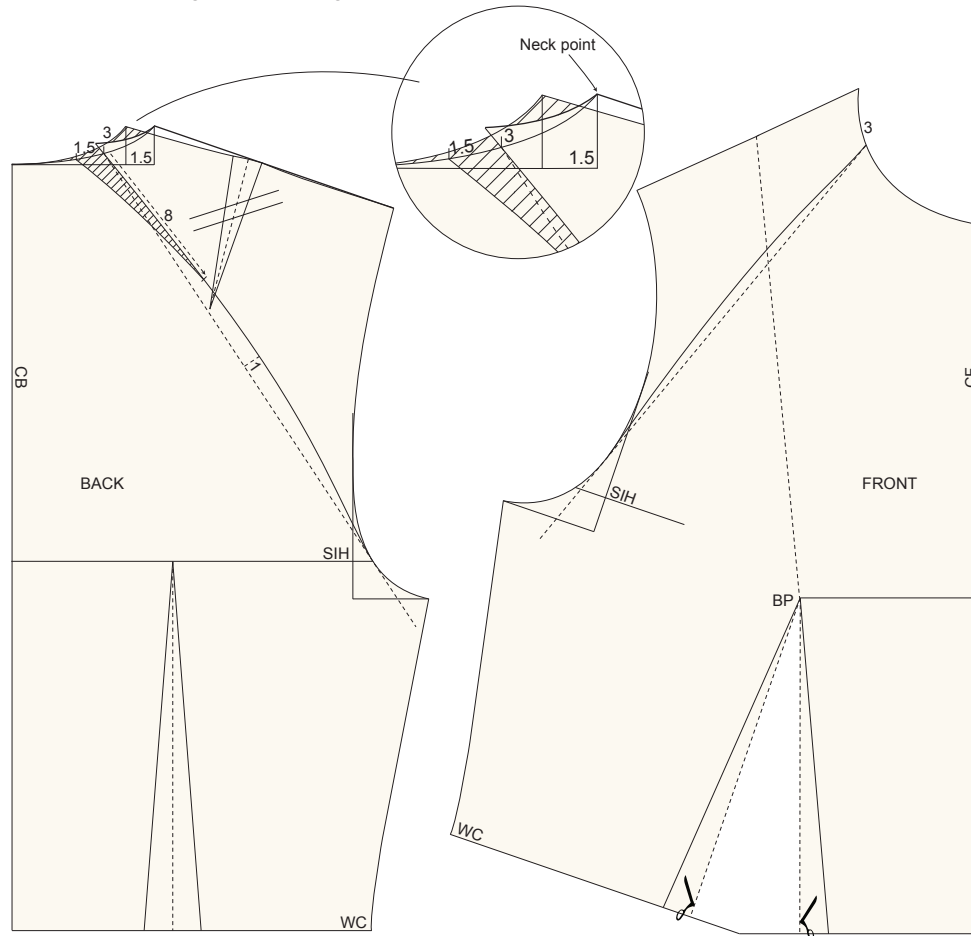
Before beginning this sleeve, place the alignment (bust dart) of the front into the waist dart. You can move it later as needed.

You must also now decide whether to remove or keep the shoulder dart on the back. In our illustration we have chosen to keep the shoulder dart.

Draw a line from the shoulder point on your sleeve that divides the sleeve into two pieces. Be aware that this line is perpendicular to the bicep line.

Instruction

Displace the neckline horizontal by 1.5 cm at the front. Draw a new shoulder line and remove the shoulder dart from the pattern. Measure 3 cm downwards the new neckline and then draw a guide line tangential to the armhole.



From the point where the guide line meets the armhole to the neckline, the line is divided into two equal parts. From there, place a 1 cm perpendicular guide line. Through that point, draw a curved line which is the sleeve line (raglan).

From the point where the neckline and the new line meet, measure 8 cm downwards the raglan line and 1.5 cm into the neckline. Connect the points.

- Note that a bit is added at the neckline on the sleeve part to make the length of the lines equal.

Measure 3 cm downwards the neckline on the front and draw a guide line tangential to the armhole from this point. Draw a curved line along the guide line. This is the sleeve line (raglan).

On the sleeve, mark a point 1 cm from each side of the shoulder point. Copy the sleeve part from both front and back and place them on top of the sleeve cap, as shown in the figure.

At the shoulder point, measure 6 cm downwards the line. Draw the new shoulder line along the shoulder and down to the point 6.

- Note that there is drawn a slightly curved line at the shoulder to get a neat rounded shoulder.

Finally, measure up the pattern pieces and correct if needed.

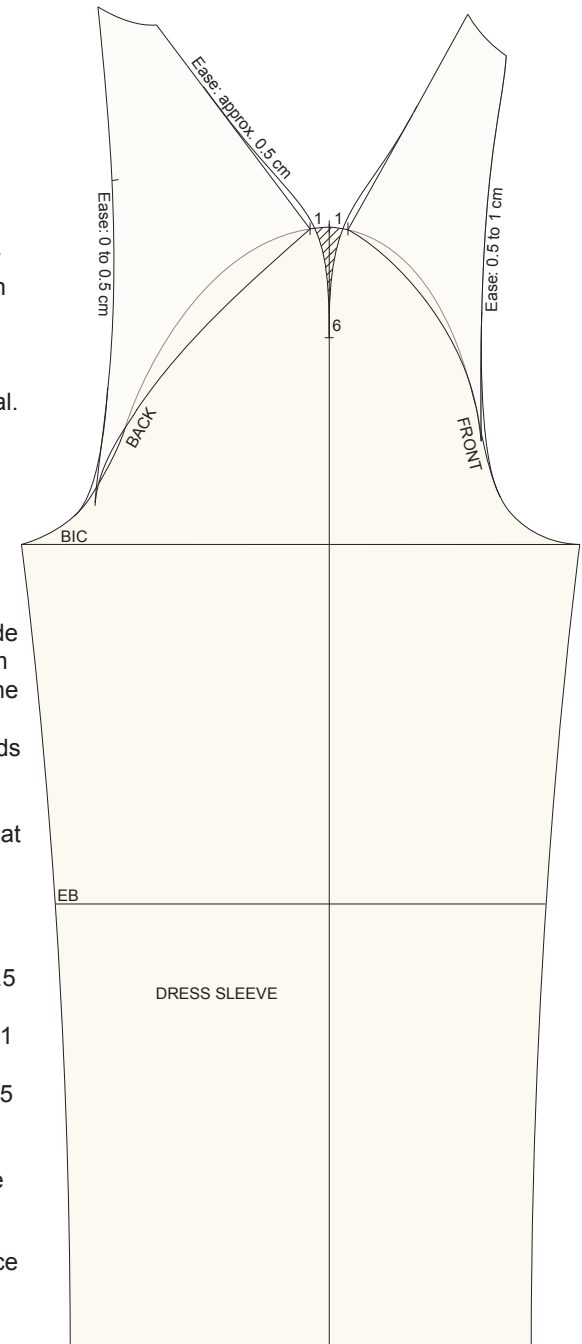
- At the raglan at the back there must be 0 to 0.5 cm ease.

- At the raglan at the front there must be 0.5 to 1 cm ease.

- At the shoulder lines there must be approx. 0.5 cm ease on the back shoulder line.

The pattern pieces can now be copied. See the next page for the pattern overview.

Note: in this instruction the sleeve is in one piece so that the shoulder seam will be similar to a dart. If you want a seam all the way down the arm, separate the sleeve at the line at the shoulder point.



RAGLAN SLEEVE - Pattern overview

